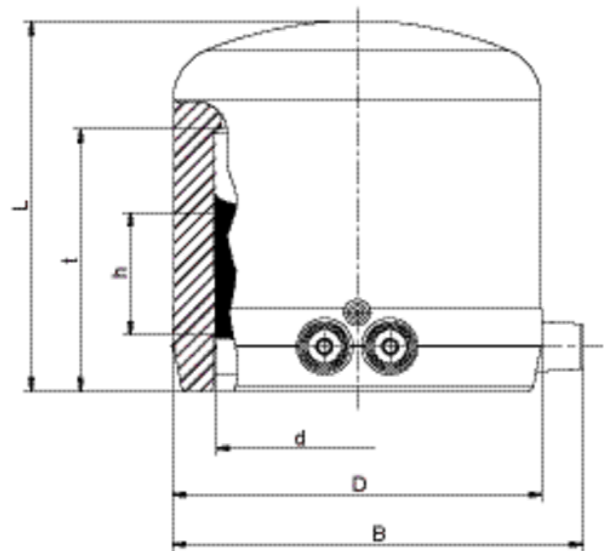


MV

Τάπα ηλεκτροσυγκόλλησης

With exposed heating coil for optimal heat transfer, large insertion depth, wide fusion zone plus cold zones at the end to prevent the flow of molten material, for use without holding devices.





Τάπα ηλεκτροσυγκόλλησης

Areas of Application

The FRIALEN-End Caps MV are used to close HD-PE pipe ends.

Also recommended as fused caps (d32 and d40) for the dome of FRIALEN-Pressure Tapping Tees DAA and DAP up to d63.

Assembly Instructions

The fusion of a pipe end or the dome of a FRIALEN-Pressure Tapping Tee with the FRIALEN-End Cap MV takes place using FRIALEN-fusing – leakproof and longitudinally strong.

The fusion area is prepared according to the general installation instructions (see “Assembly Instructions” for “FRIALEN-Safety Fittings for house connections and distribution pipes up to d 225”). This involves removing the oxide skin and cleaning the pipe ends. Next to moulded fittings and accessories it is recommended to install a piece of pipe of 20 – 60 cm length, accordingly to the diameter, so that the pipeline can be continued later on.

Good reasons for using the FRIALEN-End Caps MV:

Large coupler depth for ease of pipe guiding (no holding clamps required)

Extra wide fusion zones

Maximum stability through great wall thickness

Cold zones at the front side and in the middle of the coupler

Exposed heating coil for direct heat transmission to the pipe

Small annular gap for build-up of optimum joining pressure in the fusion zone

Touch proof electric contacts

Fusion indicator for visual fusion control

Durable batch marking

Individually wrapped for dirt protection

Additional barcode for tracing back the fitting (Traceability-Coding)