

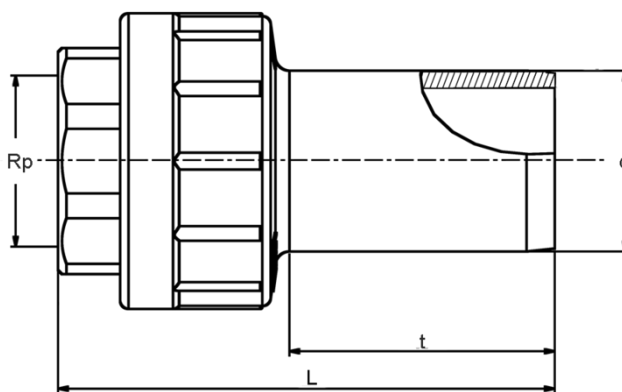
# UAM

## Αντάπτορας HD-PE/Brass με θηλυκό σπειρώμα

Compact fitting, spigot allows for assembly irrespective of its position and homogenous fusion joint with all suitable FRIALEN fittings. Brass side permanently and tightly connected with PE spigot. Cannot be released or rotated.

Other thread sizes on request

Lead-free version available on request



PE 100 SDR 11

Maximum working pressure 16 bar (water)/5 bar (gas)



Κωδικός Προϊόντος	d	Rp	BX	PU	L	t	SW	Weight kg
616615	20	1/2"	80	4800	79	41	26	0,080
616616	25	3/4"	60	3600	77	44	32	0,120
616156	32	1"	36	2160	88	47	40	0,190
616157	40	1 1/4"	20	1200	100	56	49	0,290
616158	50	1 1/2"	16	960	102	57	55	0,350
616621	63	1 1/2"	10	600	115	63	55	0,450
616159	63	2"	10	600	120	63	67	0,580
616665	75	2 1/2"	10	300	128	70	82	0,760
616623	90	3"	10	240	144	78	94	1,030
616624	110	4"	6	180	161	87	120	1,870
616666	125	4"	4	180	161	92	120	1,990

Please observe the marking directly at the product, which is mandatory.

DVGW-Registration Nos.

DW-7511CR0155

DG-7521CR0172

The brass-female thread is made from material CW612N or CW617N. Other brass materials on request.



## Αντάπτορας HD-PE/Brass με θηλυκό σπειρώμα

### Areas of Application

The FRIALEN Universal Adapter UAM serves to connect metal construction parts which have a screwed connection e.g. valves with an HD-PE connection pipe. Suitable for gas and water supply or for industrial applications. The version with PE spigot end allows for assembly regardless of location and the homogenous fusion connection with all suitable FRIALEN fittings (exception of FRIALONG- and FRIASTOPP-Long couplers).

The threaded joint is according ISO 7-1.

### Assembly Instructions

Usually the screw connection needs to be assembled first as assembly related torsion forces should not bear down on the connected PE pipe. The tightening forces must be introduced via the specially designed wrench area.

The fusion of the PE spigot end with a FRIALEN coupler takes place by using FRIALEN fusion process – leakproof and longitudinally strong.

The installation is according to the general installation instruction (see "Transition Fittings with threaded connection" in "Assembly Instructions" for "FRIALEN-Safety Fittings for house connections and distribution pipes up to d 225"). This involves removing the oxide layer and cleaning the pipe ends.

### Good reasons for using the FRIALEN-Universal Adapter UAM:

PE 100 spigot end – quality controlled

Tested and quality controlled brass quality

Assembly regardless of location, high degree of flexibility due to separate fusion of PE spigot end

May be used with all FRIALEN fittings of identical dimensions (exception of FRIALONG- and FRIASTOPP-Long couplers)

Universal combination option with the FRIALEN range

HD-PE side with spigot end for processing without holding device, designed for FRIALEN couplers

Pull-proof connection

Brass side tightly connected with PE spigot end, safe from distortion

Compact construction

Additional barcode for tracing back the fitting (Traceability-Coding).

Oxidic layer may be removed from PE spigot end using scraper tools