

# USTN

## Transition fitting HD-PE/steel with male thread

Transition fitting, steel pipe USTN

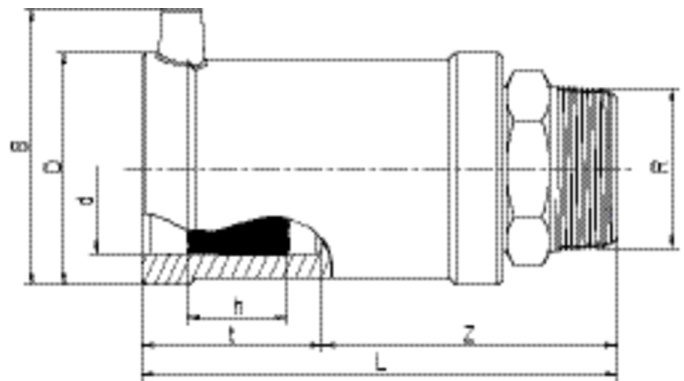
- Gas and H<sub>2</sub>
- Maximum pressure: Gas 5 bar
- Material: PE 100 and steel [EN 10278; EN 10277-3 – 11SMn30+C –, thread to EN 10226-1]
- Safety technology

### Note:

Anchored the steel side non-detachable and non-rotatable in the PE.

Self-sealing, patented sealing geometry without elastomeric gasket for use in gas applications.

Other thread dimensions available on request.



PE 100 SDR 11

Maximum permissible working pressure 5 bar (gas)



Reference	d	BX	PU	D	R	L	t	z	h	B	Weight kg
612580	32	20	1080	47	1"	119	42	77	24	61	0,345
612582	40	20	800	58	1 1/4"	131	46	86	30	70	0,530
612584	50	15	600	70	1 1/2"	146	53	93	30	80	0,700
612586	63	10	400	84	2"	152	53	99	35	94	1,050

### Other thread dimensions on request

FRIALEN safety fittings can be fused with SDR11 – SDR17.6 pipes, minimum wall thickness s minimum  $\geq 3$  mm. Other levels of SDR can be processed on request. Please note the mandatory labels directly on the product. DVGW test mark issued: DV-7501AU2256

# USTN

## Transition fitting HD-PE/steel with male thread

### Areas of Application

The FRIALEN-Transition Fittings USTN are threaded joints as an adaptor from a metal pipe with threaded socket to a HD-PE pipe. Joint on the part of HD-PE by FRIALEN-Coupler.

### Assembly Instructions

The threaded component must be held with a spanner to prevent it twisting in the HD-PE component. The fusion of the HD-PE side takes place by FRIALEN-fusing – leakproof and longitudinally strong. The installation of the steel and the HD-PE side has to be prepared according to the general installation instructions (see "Transition Fittings with threaded connection" in "Assembly Instructions" for "FRIALEN-Safety Fittings for house connections and distribution pipes up to d 225"). This involves removing the oxide skin and cleaning the pipe ends.

### Good reasons for using the FRIALEN USTN:

- Compact construction
- HD-PE side with exposed heating element for optimal heat transfer
- Cold zones at the end to prevent the flow of molten material
- No holding clamps required
- Large insertion depth, extra wide fusion zones
- Steel end permanently anchored in the HD-PE and will not distort
- Self sealing patented sealing geometry without elastomer seal
- Additional barcode for tracing back the fitting (Traceability-Coding)