

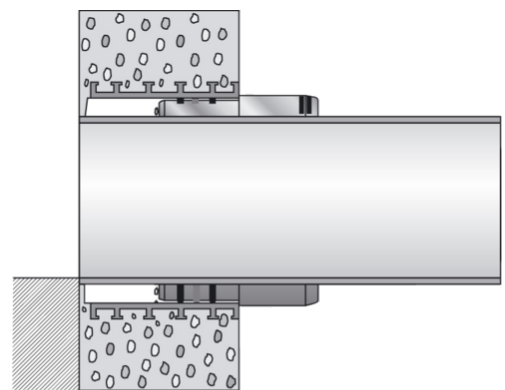
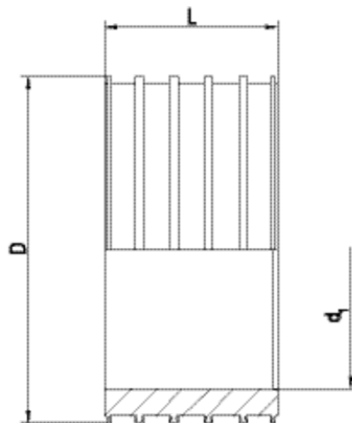
# ASFL

## Shaft lining adapter for sewage inspection chambers L = 250 mm

as joining element between xxx and FRIAFIT-Sewage Insert Sleeve (AEM)

Shaft lining adapter for sewage inspection chambers L = 250 mm ASFL

- Connecting element between a brick shaft or concrete shaft and FRIAFIT sewage insert sleeve AEM for installation on the construction site
- Reversed anchoring webs (T-section) on the entire circumferential width ensure a firm and tight fit in the shaft
- Defined internal surface and fitting ratio for reliable system seal with AEM
- Stable internal diameter due to large wall thickness



PE 100

Maximum permissible test pressure 0.5 bar to DIN EN 1610

Reference	d <sub>1</sub>	Pipe Diameter	BX	PU	D	L	Weight kg
680505	280	225 250	2	16	355	250	4,670
680507	316	280	2	16	400	250	6,650
680508	357	315	1	9	450	250	8,750
680509	402	355	1	6	500	250	11,050
680511	502	450	1	2	630	250	23,400
680512	628	560	1	2	710	250	16,400
680513	713	630	1	2	800	250	20,300

# ASFL

## Shaft lining adapter for sewage inspection chambers L = 250 mm

Sewage pipe systems are high-value assets of a value which has to be maintained for a long time. Increasing demands on the public sewage system require materials which meet these criteria. HDPE sewage pipes have been fused for many years with the FRIAFIT HDPE sewage system tightly, frictionlocked and root-proof.

### Areas of Application

The FRIAFIT-Sewage Inspection Chamber Adapter ASF is the joining element between concrete inspection chamber according to DIN 4034 and the FRIAFIT-Sewage Insert Sleeve AEM.

### Assembly Instructions

The ASF is usually fitted in at the concrete works during manufacture of the inspection chambers. Application of the ASF is possible even on local concrete inspection chambers.

The ASF Sewage Inspection Chamber Adapter is installed according to the general installation requirements (see also "Fitting Instructions" of the FRIAFIT-Sewage System).

### Good reasons for using the FRIAFIT-Sewage Inspection Chamber Adapter ASF

- The ASF is a corrosion resistant HDPE construction part
- Stable internal diameter due to big wall thickness
- Anchoring ribs twisted at the rear across the entire width ensure proper and leakfree anchoring in the concrete
- Width of component and connection HDPE/concrete correspond to DIN 4034
- Defined internal area for the reliable system sealing (AEM)
- For subsequent installation in bricks chambers a longer version **ASFL** (L = 250 mm) was developed