

Fit for all challenges

FRIAMAT 7

Your hero for challenging conditions: FRIAMAT 7

The new FRIAMAT generation meets your needs even better. We have modernized our tried-and-tested FRIAMAT fusion units to the latest state of the art.

We made the FRIAMAT “fit for the future” in order to simplify your work – in every respect. Starting with the unit’s low weight and high performance to easier, simpler operation and documentation.

FRIAMAT 7 Basic is our successful Basic model, which we have thoroughly revised:

- **flow-optimized active cooling**
- **robust housing**
- **high-quality graphic display**
- **intuitive user interface**

FRIAMAT 7 Prime additionally offers many digital functions for documentation and extended traceability, enabled by the new Bluetooth interface in combination with the WorkFlow solution.

With the optional 1D/2D scanner, the new FRIAMAT is also ready to read and process 1D/2D barcodes according to ISO 12176-5. This enables you to capture all information required for fusion including traceability data and extended product information with just one scan.

The easy way to work on the construction site

Our fusion unit adapts to the user, not the other way round. That is why we have developed FRIAMAT in such a way that they are extremely convenient and flexible to use on the building site. Their compact and robust design

increase mobility. Thanks to the ergonomic handle, the unit can be carried comfortably. Simply tilt the unit to work better: the FRIAMAT is also ideally suited for this.

The extremely bright and high-contrast display is easy to read, in bright sunshine as well as on dark rainy days.

Documentation made easy

With FRIAMAT 7 Prime you can document all relevant information quickly and easily, providing full documentation and traceability according to ISO 12176 and ASTM F2897. Besides fusion, traceability or GPS data, additional data on the building site can also be recorded and stored.

You can enter data using the proven mini-scanner or manually via a virtual keyboard. With the new, optional 1D/2D barcode scanner, the FRIAMAT is also ready to read 1D/2D barcodes according to ISO 12176-5.

With just one scan (one scan fuse), you can capture all information required for fusion including traceability data and extended product information.

And it gets even easier: Using the new Bluetooth interface, you can pair the FRIAMAT with the WorkFlow app, which also offers a scan function for barcodes. Many other useful functions are also available.

Advantages at a glance:

High performance by flow-optimised, active cooling for reduced downtimes and process times and high efficiency in continuous use and processing fittings in large dimensions.

Great usability and ease of use through a TFT display with a clear menu structure and user guidance, sunlight-suitable and optimally readable even in the most unfavourable lighting conditions.

Safe use and process control by displaying all process data at all times, prevention of performance-related fusion aborts through FRIAMAT preCheck function, simplified and standardized processes as well as correct temperature recording.

Easy handling thanks to low-weight, comfortable portability and increased mobility due to long cables.

Convenient use in tilted position for easy operation – ideal for all construction site conditions even on inclined and uneven surfaces.

Full documentation and traceability: advanced data processing according to ISO 12176 thanks to the Bluetooth interface and connection to the WorkFlow app.

Serviceability and sustainability thanks to dedicated service centers providing full maintenance, repair and spare part availability to ensure long service life.





**Save your thoughts about the cold.
It does not matter.**

Snow, ice and slippery conditions pose extreme challenges for man and machine on construction sites. Nevertheless, work must go ahead. With the latest FRIAMAT generation, it does. Because the high-tech fusion units are developed for extreme temperatures down to minus 20 degrees Celsius. This ensures maximum performance and efficiency with zero downtime – even in icy regions.



**Stay cool.
Even in the hottest moments.**

Plenty of sun and heat make for wet brows. But downtimes on construction sites are not an option. Developed for extreme conditions, the new FRIAMAT generation works reliably and precisely at temperatures up to + 50 degrees Celsius. Thanks to Active Cooling Technology, cooling already starts during fusion. This means that any number of fusion processes can be carried out in succession – without any time spent waiting.



**Be prepared.
Even for rainy days.**

Overcoming limits, making the unthinkable possible and meeting special requirements at all times. In absolute safety. That is what the new FRIAMAT generation does. Even in extreme humidity and rainfall. On such days, the IP54 certification ensures optimal conditions – so that every fusion process is in safe hands.



**Bright light is no longer a challenge.
That's a promise!**

User-friendliness in a new dimension also means always having a clear view. No matter how bright the sun, how problematic the lighting conditions or unfavourable the position – the extremely bright and high-contrast 4.3" TFT colour display provides a reliable view and guarantees legibility.

Simple. Robust. Digitised.

Never has it been easier to document fusion process data and other relevant information. Using the Bluetooth interface, you can pair the FRIAMAT 7 Prime with the WorkFlow solution on your smartphone. You can then simply scan fusion and traceability barcodes or control the fusion process easily and conveniently. And there are many more reasons for a FRIAMAT.



Powerful and economical in use

- State-of-the-art converter technology with flow-optimised active cooling reduces downtimes and process times.
- Future-proof microcontroller technology.
- Robust housing design for tough site use.
- Longer cables increase mobility on the building site.
- Long-term usability through coordinated equipment service and spare parts availability.
- Software updates via USB port.
- Delivery in robust transport box included.



Simple and comfortable to use

- High-resolution, extremely bright 4.3" TFT colour display guarantees best readability.
- Intuitive user interface with clear menu structure.
- With FRIAMAT preCHECK function: the FRIAMAT determines automatically whether the next fusion weld can be performed completely to the end.
- Tiltability for easy and convenient use in all site conditions.
- Supervisor function for individualisation of device functions and specification of operating sequences of the FRIAMAT 7 Prime.



Easy documentation and data management

- Recording and documentation of fusion and traceability data according to ISO 12176 as well as extended installation information, such as order number and welder.
- Up to 20,000 fusion logs can be stored in the unit.
- Output as PDF-, CSV or JSON format via standard USB stick.
- Bluetooth interface for connection to the WorkFlow App.
- Optional 1D/2D scanner and thus ready for processing 1D/2D barcodes according to ISO 12176-5.

WorkFlow Basic – the first step into the digital fusion world

Introducing WorkFlow Basic: With WorkFlow Basic, you can transfer your **fusion protocol** to your computer with **just a few clicks** – quickly and easily via e-mail. For each component, **a PDF and CSV report** with all fusion data is generated, which you can enhance with up to **four photos** of the fusion.

WorkFlow Basic is your **central solution** for digital document access, replacing the outdated FRIAMAT app while maintaining the **same trusted features**.

WorkFlow Basic is our free version available everywhere in the world. **WorkFlow Pro** is our paid version available in specific countries.

Switch to WorkFlow, if you're still using the FRIAMAT app – as it will **no longer** be updated. Welcome to an exciting new chapter with WorkFlow Basic!



Easy in-app registration – name, e-mail address, country and password



Start immediately – pair your FRIAMAT and start your fusion process



Advanced fusion documentation – add pictures and geo localization



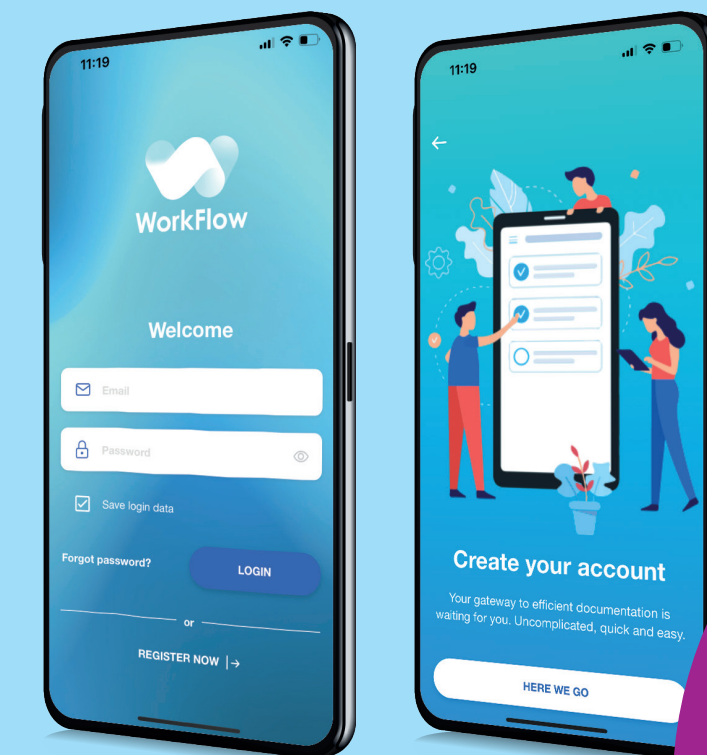
Tracking of all work steps – step by step and down to the last detail



Secure data transmission – via encryption using SSL protocol



Send protocols via mail – protocols as .pdf and .csv



Start using the
free app now!



WorkFlow Pro – your digital assistant for all work steps

WorkFlow Pro ensures safety and control in urban and municipal construction projects by comprehensively tracking all work steps, eliminating the need for time-consuming follow-up queries. The digital assistant saves manpower and reduces errors by providing a reliable overview, tailored exactly to your needs. Those who lack sufficient helping hands on the construction site will find their own sufficient with WorkFlow.



Traceability of all work activities – step by step and down to the last detail and for all components – independent of manufacturer

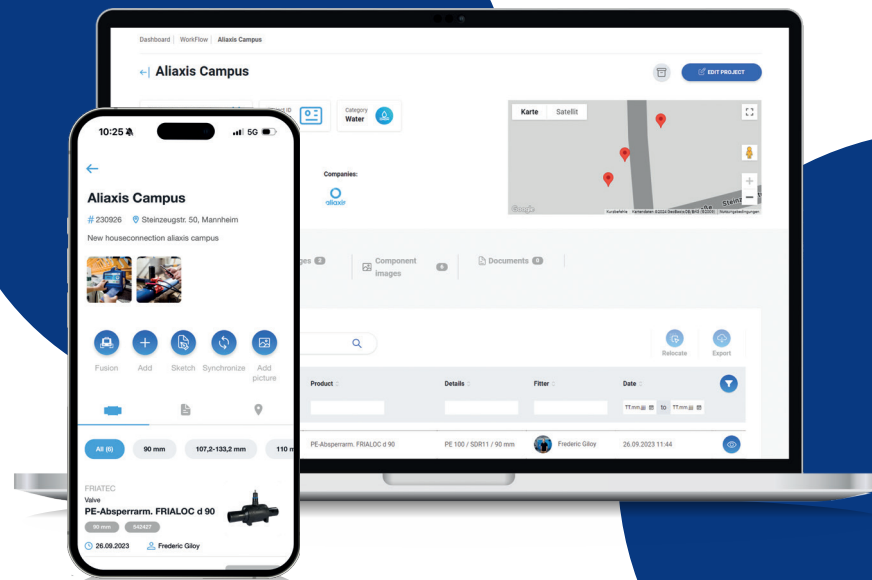
Making on-site assembly easier – saves time and money

Greater transparency – thanks to digital protocols and real-time access to data

Automated protocol generation – for less administrative work

Significantly minimised risks – due to fewer documentation errors

Secure data transmission – using SSL encryption



WorkFlow Pro works – and this is how:



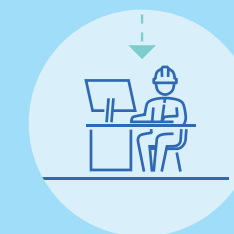
Fuse

Scrape, clean, install the component, scan the barcode, fuse – so far the same. With WorkFlow Mobile support, important information is added to the fusion protocol during the fusion process, e.g. GPS data to record the component's location, or photos to document its proper installation.



Synchronise

Paperless, in real time, with secure encryption: WorkFlow Mobile transfers all data to the WorkFlow cloud, where the data is immediately sorted, processed and stored. The corresponding protocols can be accessed anytime and anywhere by anyone who is authorised to do so – and by no-one else.



Manage

All protocols, images, components and many other pieces of information such as the construction site where each component was installed, or which fusion unit was used – all of this can also be accessed centrally from a desk on the construction site or in the office, via WorkFlow Web. Complete records for each construction site in a separate project.

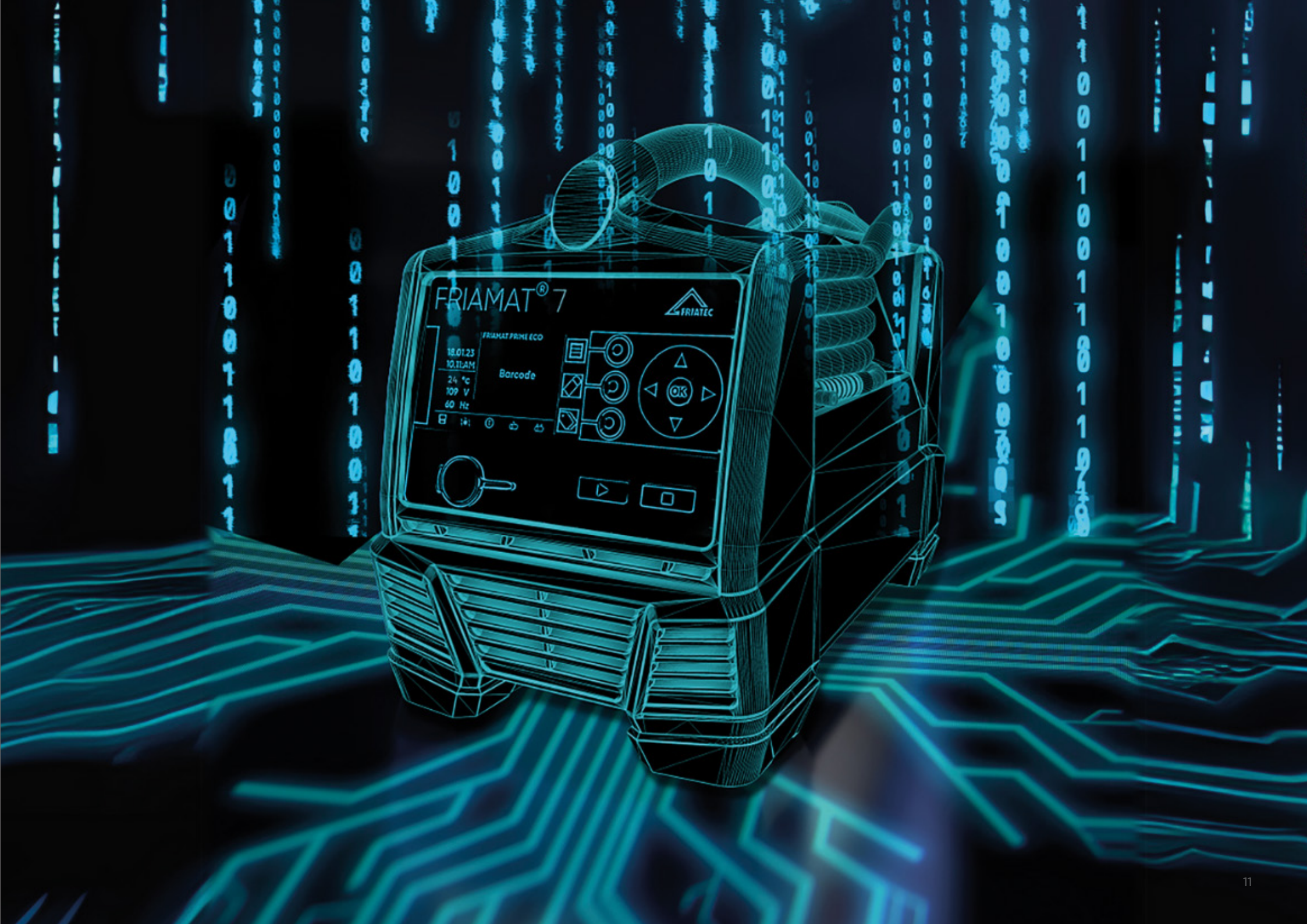
Everything in sight. Everything under control.

A separate report for each fusion process in the pipeline network with its own fusion protocol, adding, printing and distributing documents, photos and geodata, information on components and map views individually – and all this on endless sheets of paper. Not anymore! Because the smart digital solution manages it for you.

Technical details*	FRIAMAT 7 Basic	FRIAMAT 7 Prime
Unit type	Universal fusion unit without documentation function	Universal fusion unit with documentation and traceability function and Bluetooth interface
Version with mini-Scanner	Order no. 611130	Order no. 614134
Version with 1D/2D scanner	Order no. 614130	Order no. 614134
Maximum diameter	To d 1200**	To d 1200**
Input voltage range	AC 190 V – 250 V	AC 190 V – 250 V
Frequency range	44 Hz ... 66 Hz	44 Hz ... 66 Hz
Input current	AC 16 A max.	AC 16 A max.
Power	3.5 kW	3.5 kW
Unit fuse	16 A slow acting	16 A slow acting
Fusion voltage	8 – 48 V	8 – 48 V
Output current	max. 110 A	max. 110 A
Fusion current monitor	Short circuit and open circuit	Short circuit and open circuit
Barcode type	1D: Code 2/5 interleaved 2D: ISO 12176-5	1D: Code 2/5 interleaved, Code 128 2D: ISO 12176-5
Interface	USB	USB / Bluetooth® Low Energy V4.2 (CE, FCC, IC certified)
Documentation of fusion and traceability data	No	Yes
Data memory	-	20,000 protocols
Log format	-	PDF / CSV / JSON
Manual barcode emergency entry	Yes	Yes
FRIAMAT preCHECK function	Yes	Yes
Software update via USB port	Yes	Yes
Operator pass	No	Optional (order no. 623100)
Supervisor pass	No	Yes
Start/Stop pass for remote control	Optional (order no. 624003)	Optional (order no. 624003)
Working temperature range	-20 °C ... +50 °C	-20 °C ... +50 °C
Languages	23*	23*
Power cable	5 m with shaped plug	5 m with shaped plug
Fusion cable	4 m with fitting connector, 4 mm diameter	4 m with fitting connector, 4 mm diameter
Weight	Approx 12.8 kg	Approx 12.8 kg
Dimensions W x D x H	260 x 500 x 340 mm	260 x 500 x 340 mm
Housing	Enclosure rating IP 54 / Protection class I	Enclosure rating IP 54 / Protection class I
Approval/quality	CE, ISO 9001, WEEE-Reg.-Nr. DE 49130851, RoHS	CE, ISO 9001, WEEE-Reg.-Nr. DE 49130851, RoHS
Accessories	Operating instructions, transport box	Operating instructions, transport box

* Specifications subject to change

** With FRIAMAT Basic and FRIAMAT Prime, FRIALEN and FRIAFIT safety fittings up to d 900 can be fused in the entire working temperature range from -20°C to +50°C. Use to process fittings from other manufacturers, even up to d 1200 and possibly larger, is fundamentally possible. However, the specific power requirement of the fitting at the prevailing processing temperature must first be clarified with the fitting manufacturer.





Aliaxis Deutschland GmbH

Steinzeugstrasse 50

68229 Mannheim, Germany

T: +49 621 486-0 • info.de@alixaxis.com

www.alixaxis.de/en/products/friatools/friamat7 • www.alixaxis.de



Ref2630